



武士道
BUSHIDO

- the way of the warrior -



The Philosophy

Part of the Buddha-bar network, but on a different league: at Bushido we follow the exemplary of the Samurai code of conduct in all aspects of our existence.

Offering the quintessential break from the frenzy of urban life and inspired by the mysticism of Japan is a chic and trendy lounge and restaurant in the heart of Seef - Bushido. It is a blend of the 21st Century setting with the way of the warrior combining concepts of chivalry with the serenity of Buddhism.

As you drive in, you will be stunned by its monumental proportions; and once you've stepped in, you will feel like you've been transported to a different world – one with a perfect balance between austerity and richness.

A small moat and the landscape that surrounds it prepare you for the rich and vast space within. The colours and architecture of feudal Japan greet you as do the Samurai-armoured alcoves. What makes this venue stand out from the rest is the stairway of wrought-iron balustrades from the restaurant that leads you to the mezzanine bar. Dark woods, dim lighting and deific silks help you give in to your senses. Bushido is more than dining. It is a rare indulgence in class and sophistication. Prepare to lose yourself in a realm of sensuality.

“PERFECT FUSION”

Bahrain This Month



KONNICHIMA

“ONE OF THE FOREMOST DINING AND SOCIAL VENUES”

Fashion TV



7	THE MENU
9	BUSHIDO CATERS FOR
11	FACILITIES
13	PROXIMITY
15	AREAS
17	THE MAIN DINING
19	TEPPANYAKI ROOM
21	TERRACE
23	LOUNGE TERRACE
25	THE LOUNGE
27	ODA ROOM
29	TENSU ROOM
31	MUSIC & SPECIAL EVENTS

CONTENTS

**Traditional Japanese cuisine with a twist,
offering more than just sushi**

Bushido set a benchmark for the Japanese restaurant scene in the whole of the Middle East almost immediately after its opening in 2009. Experimenting with exotic delicacies and high-end cuisine, the chefs at Bushido deliver an astounding menu.

One of the secrets to the delectable dishes is the traditional culinary styles in the kitchen and live cooking stations. Japanese cuisine, while commonly thought of as sushi, has so much more to offer. With centuries of history behind it, there is an etiquette it flaunts that is rarely seen in other cultures.

“SIZZLING DINING EXPERIENCE”

Gulf Weekly

THE MENU

“RANKED TOP 5 LOUNGE IN THE MIDDLE EAST”

Askmen.com

MEETINGS:

- Board Meetings
- Corporate Meetings
- Business Lunch
- Business Dinner
- Conference

GATHERINGS:

- Industry Gatherings
- Family Gathering
- Ceremonial Meal
- Cocktail Reception

SPECIAL EVENTS:

- Concert
- Fashion Show
- Product Launch
- Exhibition

BUSHIDO CATERS FOR

FACILITIES:

- Ample parking facility
- Valet parking available
- Business facilities
- Flexible A/V equipment
- Variable interiors
- Natural lighting
- Experienced and professional staff
- Impeccable quality of food



FACILITIES



DISTANCE MEASURED IN TIME VIA CAR/TAXI

Airport:	20 minutes
Saudi Arabia border:	20 minutes
Hotels:	
The Ritz Carlton:	(Direct Access)
L'Hotel	2 minutes
Sheraton	5 minutes
Crowne Plaza	10 minutes
Radisson	10 minutes
Gulf Hotel:	15 minutes
Al Areen Palace	30 minutes
Sofitel	35 minutes
Kempinski Hotel	5 minutes
Main shopping malls and attractions:	
City Centre Mall	5 minutes
Seef Mall	5 minutes
Formula 1 Circuit	30 minutes
Exhibition Center	5 minutes
Main districts:	
Bahrain Financial harbour	10 minutes
Diplomatic Area	10 minutes
Manama Souq	10 minutes
Amwaj Islands	25 minutes

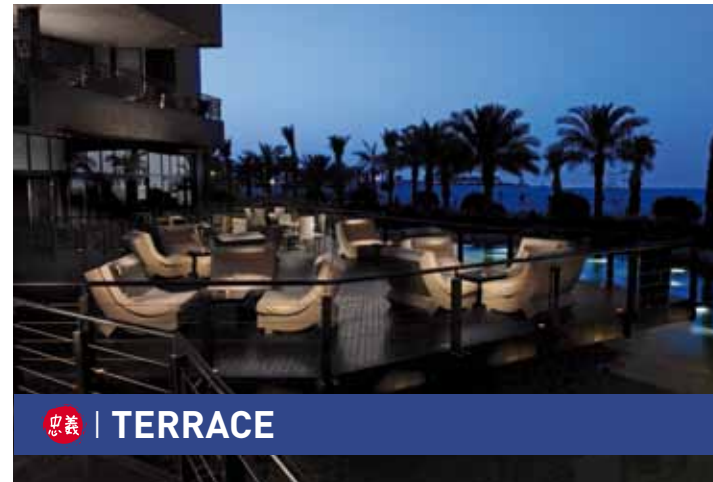
PROXIMITY



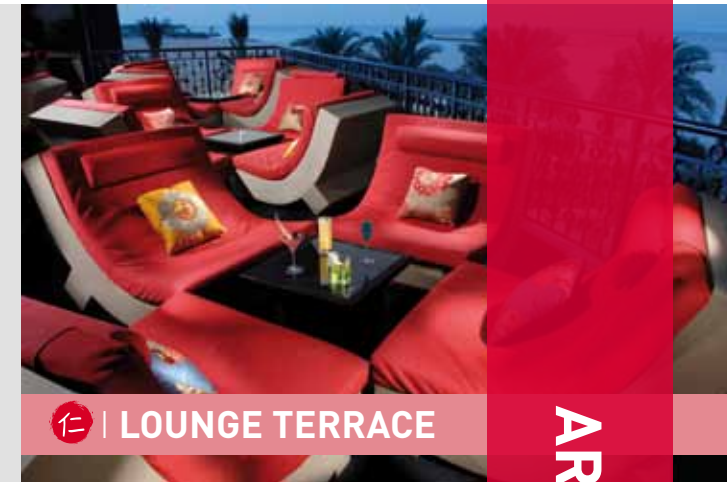
名譽 | THE MAIN DINING



誠 | TEPPANYAKI ROOM



忠義 | TERRACE



仁 | LOUNGE TERRACE



勇 | THE LOUNGE



義 | ODA ROOM



礼 | TENSU ROOM

Bushido is the code of conduct of the samurai warrior made up of 7 virtues. Each facility represents a virtue.

Honour	(Meiyo)	
Courage	(Yū)	
Rectitude	(Gi)	
Benevolence	(Jin)	
Honesty	(Makoto)	
Loyalty	(Chūgi)	
Respect	(Rei)	

AREAS

CAPACITY

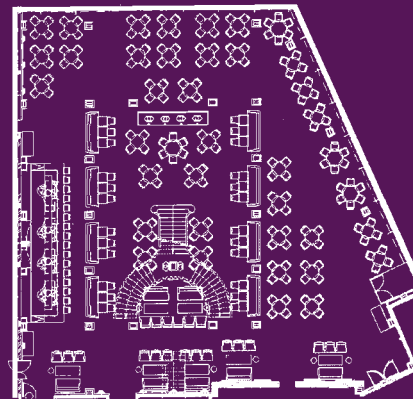
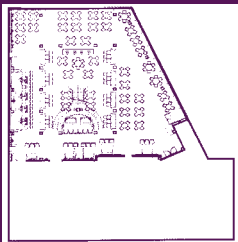
Sit down dinner 200
Reception 500

FEATURES

Sushi Bar
DJ Booth
Stunning staircase
Lounge & Restaurant seating
Lounge sofas seating
Sushi Bar

IDEAL FOR

Business lunch /dinner
Concerts
Fashion shows
Exhibitions
Special events



*minimum spent apply



HONOUR (Meiyo)

*{personal integrity: allegiance
to moral principles}*



THE MAIN DINING

CAPACITY

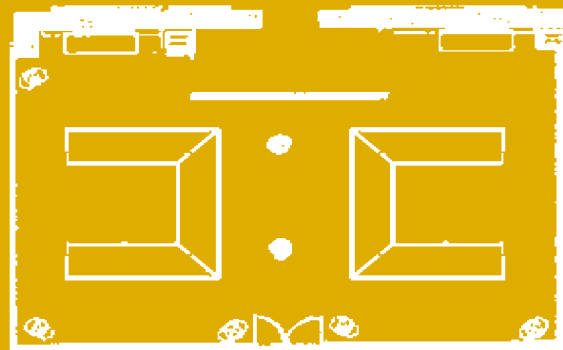
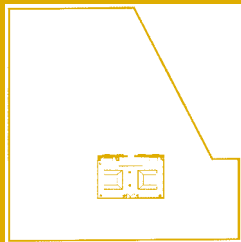
24
Divided on two Teppanyaki tables

FEATURES

Live cooking
Entertaining chefs
Fun
Customized menu right in front of your eyes

IDEAL FOR

Family gathering
Informal business lunch / dinner



*minimum spent apply



COURAGE (Yū)

{the quality of mind or spirit
that enables a person to face
difficulty, danger, pain,
etc., without fear}



TEPPANYAKI ROOM

CAPACITY

Reception 30

Sit down dinner 15

FEATURES

View of the Financial Harbour

Sea view

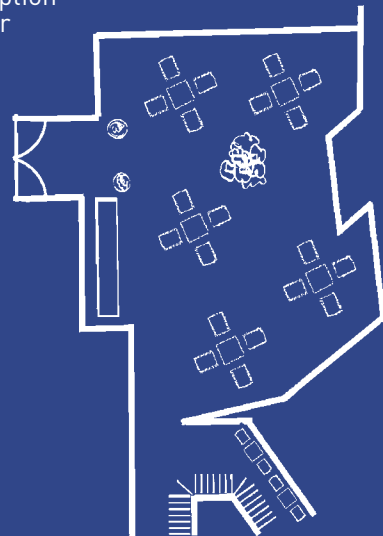
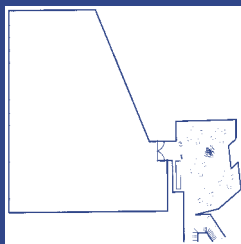
Lagoon view

Privacy

IDEAL FOR

Cocktail reception

Private dinner



*minimum spent apply



RECTITUDE (Gi)

*{rightness of principle or
conduct; moral virtue: the
rectitude of his motives}*



TERRACE

CAPACITY

Reception 30

Sit down dinner 15

FEATURES

View of the Financial harbour

Sea view

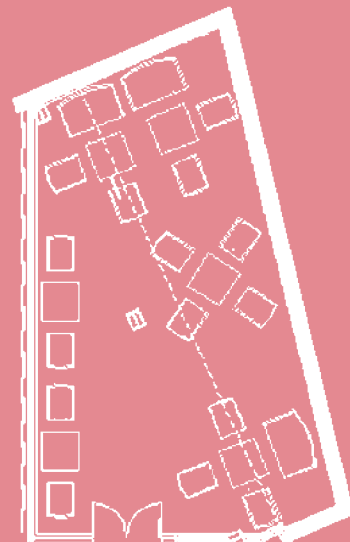
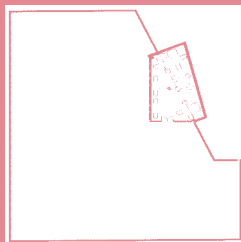
Lagoon view

Privacy

IDEAL FOR

Cocktail reception

Private dinner



*minimum spent apply



BENEVOLENCE (Jin)

*{desire to do good to others;
goodwill; charitableness. An
act of kindness}*



LOUNGE TERRACE

CAPACITY

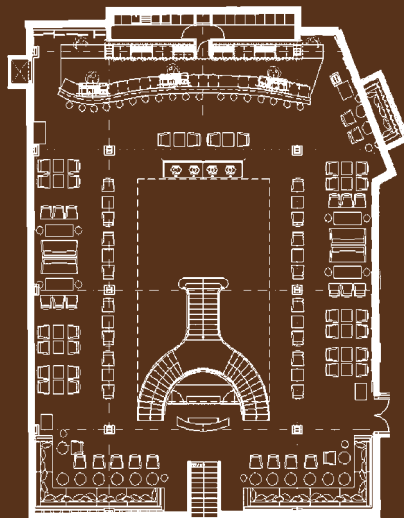
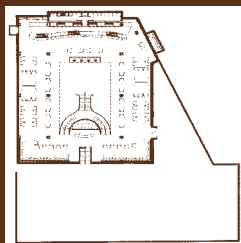
Lounge seating 150
Reception 250

FEATURES

Balcony overlooking the main dining
U-shaped
Extensive bar

IDEAL FOR

Cocktail reception
Small business meetings



*minimum spent apply



HONESTY (Makoto)

{the quality or fact of being
truthful; sincere and fair}



THE LOUNGE

CAPACITY

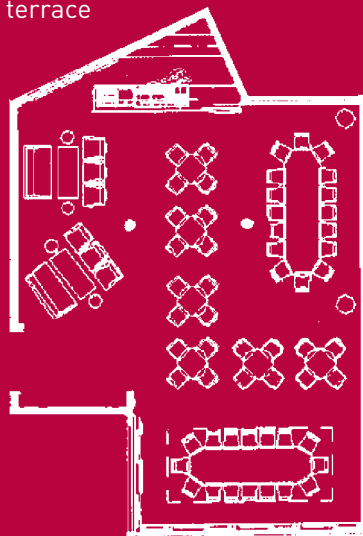
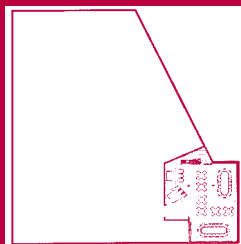
Boardroom 40
Sit down dinner 70
Reception 150

FEATURES

Private bar
Rentable full A/V equipment
Adjustable lighting
Podium
WiFi
Discrete access from entrance
Direct access to ground floor terrace

IDEAL FOR

Cocktail reception
Banquet reception
Meetings
Breakfast meetings
Conferences
Business lunch /dinner



*minimum spent apply



LOYALTY (Chūgi)

{the state or quality of
being loyal; faithfulness
to commitments or
obligations}

忠義

ODA ROOM

CAPACITY

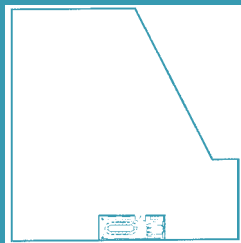
Boardroom 20
Sit down dinner 20
Reception 30

FEATURES

Natural daylight
See-through glass
Rentable full A/V equipment
Adjustable lighting
Podium
WiFi
Discrete access from entrance

IDEAL FOR

Board meetings
Cocktail reception
Breakfast meeting
Small business lunch /dinner



*minimum spent apply



RESPECT (Rei)

*{a sense of worth or
excellence of a person, a
personal quality or ability,
or something considered
as a manifestation of a
personal quality or ability}*



TENSHU ROOM



Music for the soul

The two level restaurant-lounge transports you to another place, another time. With eclectic blend of world lounge music, from noon to early evening, the resident DJ, Dara Singh, will slowly be driving your mood to the more dynamic ethno house style towards the night.

The music that seeps from behind the DJ Booth on the second level is an eclectic mix that adds on to the overall ambience. Occasionally, Bushido transforms itself in order to host special events with the most popular DJs of the world flying in to distil their musical creations infusing your evenings with the best of the lounge genre.





A: Building #52, Road 38, Block 428
P.O. Box 55577, Seef District,
Manama, Kingdom of Bahrain
T: (+973) 1758 3555
E: (+973) 1758 1487
E: reservation@bushido.com.bh

For more information visit our website www.bushido.com.bh